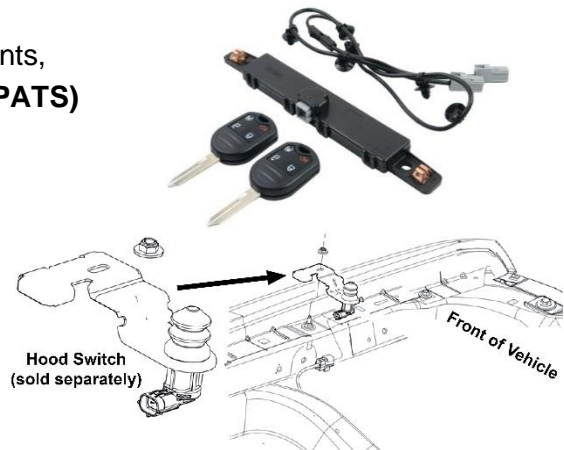


**Remote Start Kit FD1317009 (Ford BC3Z19G364A)**

**STEP 1** - Review the Remote Start System (RMST) kit contents, which consist of (2) four-button **Passive Anti-Theft System (PATS) Keys**, (1) **Antenna Module**, and (1) **Antenna Jumper Wire**.

**STEP 2** - Verify that your truck is a **2011 - 2014 Ford F-150** equipped with a **hood safety switch** and **factory power door locks**. If your truck has factory power door locks but isn't equipped with a hood switch, add-on hood switch kits are sold separately.



**STEP 3** - Verify that you have **two** (or more) **already-programmed PATS keys**. Verify that vehicle doesn't have any related **Diagnostic Trouble Codes (DTC)** present before beginning this installation procedure.

**STEP 4** - Verify that the **"customer spare key programming"** setting is enabled on your truck. If this setting is disabled, have your mechanic enable spare key programming using the appropriate software. (Refer to the *"Key Programming — Enable/Disable Spare Key or Key Programming Using Diagnostic Equipment"* section in the factory workshop manual if necessary.)

**STEP 5** - Have a locksmith cut the two new blank PATS keys to match your current PATS keys.

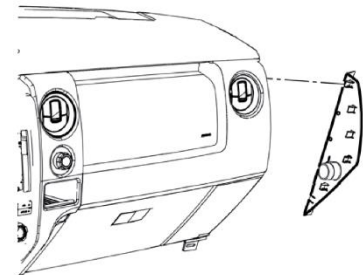
**STEP 6** - Place your truck in **key programming mode** by inserting your **first** original (already-programmed) key into the ignition and turn key from the **OFF** position to the **RUN** position, and maintain key in the **RUN** position for approximately **three seconds**. Turn first key to the **OFF** position, and remove key from ignition.

**STEP 7** - Within **10 seconds** of turning first key to **OFF** position, insert your **second** original (programmed) key into the ignition and turn from the **OFF** position to **RUN** position, and maintain key in the **RUN** position for approximately **three seconds**. Turn second key to the **OFF** position and remove key from ignition.

**STEP 8** - The doors will lock and then unlock to confirm that the **Integrated Key Transmitter (IKT)** has been activated and ready to program a new key. **Within 10 seconds** of turning second original key to the **OFF** position, **insert first unprogrammed key** into ignition and turn the key to the **RUN** position. Maintain the new key in the **RUN** position for approximately **three seconds**, then turn key to **OFF** position and remove.

**STEP 9** - To program additional new keys (a total of four keys can be programmed), repeat steps 6 through 8 for each additional new key.

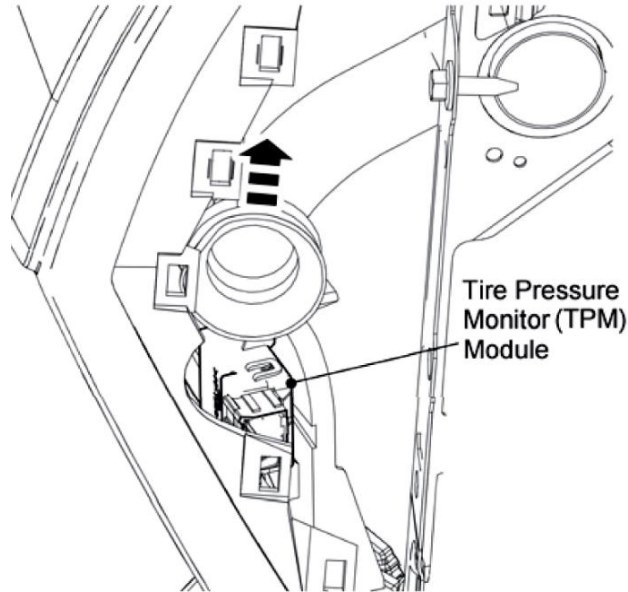
**STEP 10** - Remove **RH Instrument Panel Side Finish Panel** (see diagram). Open the glove compartment and empty the contents. Push in the two side tabs, then fully lower the glove compartment.



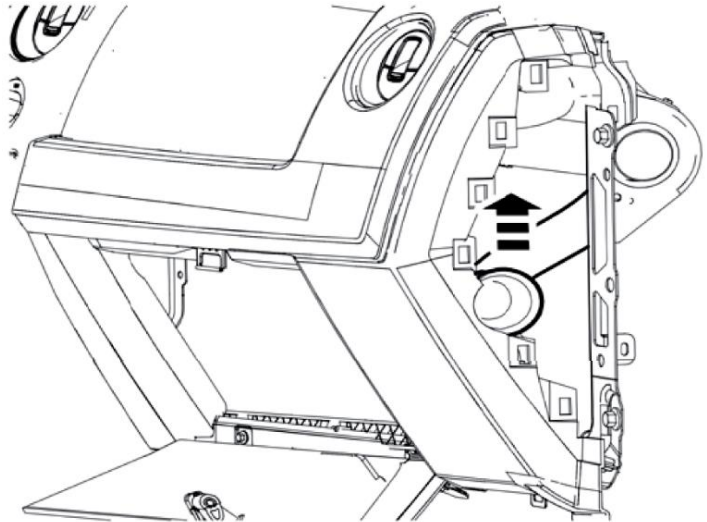
Installation by a professional technician is recommended. Refer to the factory repair manual for vehicle-specific service procedures for this part. Tighten all hardware to factory torque specifications and observe all repair manual cautions and warnings. Use safety stands whenever beneath a vehicle and always wear protective eyewear.

## Remote Start Kit FD1317009 (Ford BC3Z19G364A)

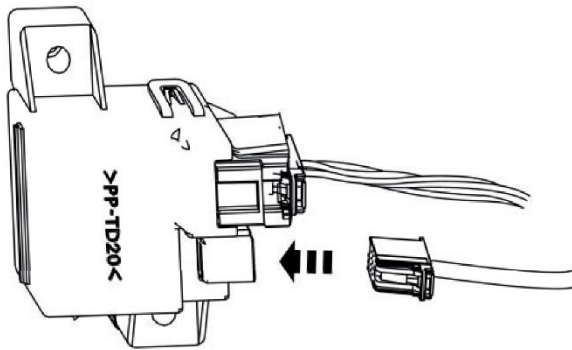
**STEP 11** - Lift the A/C duct to help locate the **Tire Pressure Monitor (TPM) Module**.



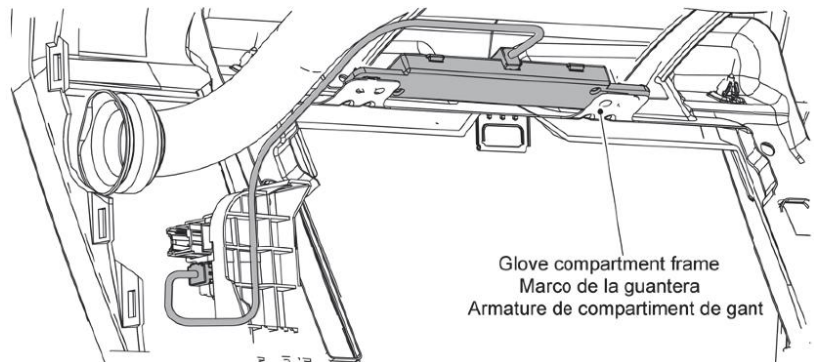
**STEP 12** - Lift the A/C duct to access the **Tire Pressure Monitor Module** electrical connectors.



**STEP 13** - Connect the Antenna Jumper Wire to the empty socket in the TPM Module.



**STEP 14** - Attach Antenna Module to glove box frame on top of existing antenna module brackets. Secure module using tie straps through holes in the brackets.



**STEP 15** - Connect the Antenna Jumper Wire connector to the Antenna Module, and secure the loose wire with tie straps. (The plastic push pins on the antenna wire are **not used** for this application.)

**STEP 16** - Close glove compartment, making sure that the Antenna Wire and Antenna Module **do not** come in contact with glove compartment door. Reinstall **RH Instrument Panel Side Finish Panel** (from step 10).



Installation by a professional technician is recommended. Refer to the factory repair manual for vehicle-specific service procedures for this part. Tighten all hardware to factory torque specifications and observe all repair manual cautions and warnings. Use safety stands whenever beneath a vehicle and always wear protective eyewear.

**Remote Start Kit FD1317009 (Ford BC3Z19G364A)**

---

## Enable Remote Start

**STEP 17** - Verify that **Ford Integrated Diagnostic System (IDS)** is updated to the most current version.

**STEP 18** - Connect IDS. Follow the prompts to select **new vehicle session**. Confirm **VIN**.

**STEP 19** - Enable Remote Start function using the IDS per the following procedure. Select the **Tool Box** icon. Select **Body**. Select **Security**. Select **Remote Start**. Verify that the information on the IDS screen is correct and all procedures have been followed. Select **"Yes"**, which will enable the Remote Start function on the vehicle.

**STEP 20a** - For vehicles equipped with **"standard" Message Center**, verify that the **Remote Start** option now appears. Using the select button on the left side of the steering wheel, cycle through the options and verify that the **Remote Start** option appears. Select **"OK"** and verify that the remote start system is enabled.

**STEP 20b** - For vehicles with the **"advanced" Message Center**, verify that the **Remote Start** option now appears. Using the select and arrow buttons on the left side of the steering wheel, select **settings**. Select **vehicle**. Select **Remote Start**. Select **duration**. Verify that the remote start duration is set to **10 minutes**.

## Function Test

*(Do not put key in the ignition for the following steps.)*

**STEP 21** - Make sure the transmission is in **"park"** and the ignition is in the **"off"** position. Remove all keys from the vehicle. Close the hood, then close all vehicle doors.

**STEP 22** - Verify that the first newly-programed key functions properly. Start the vehicle by **pressing the lock button once**, then **press the remote start button two times**.

**STEP 23** - Enter the vehicle and **confirm that it cannot shift out of park**. Shut off engine.

**STEP 24** - Close the doors and open the hood. Confirm that the vehicle **will not start** with the hood open and the doors closed.

**STEP 25** - Repeat steps 21 through 24 for the second new key.

**The installation is now complete.** Please contact a professional mechanic if you have any issues regarding remote start functionality.



Installation by a professional technician is recommended. Refer to the factory repair manual for vehicle-specific service procedures for this part. Tighten all hardware to factory torque specifications and observe all repair manual cautions and warnings. Use safety stands whenever beneath a vehicle and always wear protective eyewear.